



BLPA Newsletter

Spring 2021



President's Corner

Inside this issue:

BLPA Membership Reminders	2
Fourth of July Celebrations	3
Keeping up with NH LAKES	3
Little by Little - Step Back in Time	4
Adopt-A-Highway	5
Constructing the "New" Dam	6
In Memoriam	6
Peg Leichthammer Celebrates 105!	7
Back Page Story—Highmowing Farm	8

As Covid restrictions ease and warmer weather arrives, spirits are being lifted all around the lake. The feeling that life is returning to normal is wonderful!

I understand Camp Wabasso will have campers this summer and I'm looking forward to hearing them singing around the campfire on their beach. I also look forward to the loons making their voices heard across the lake in the early morning hours (and sometimes the middle of the night). I will be keeping in contact with Camp Wabasso to determine if we will

be able to utilize their facility for the annual meeting in late July. We may need to have our meeting at another location, or possibly via Zoom again. We will keep you all informed.

I wish everyone a safe and fun filled summer. Whether it's waterskiing, kayaking, paddle boarding, fishing, or taking an evening cruise around Blaisdell - enjoy our beautiful lake.

Doug DeLand



We welcome a typical summer on beautiful Blaisdell Lake.

SAVE THE DATE!

BLPA Annual Meeting

July 24 @ 10 AM

Venue TBD
In Person Camp Wabasso if available
Muster Field Farm is our backup site



- ✓ Pay your BLPA membership dues
- ✓ Sign up for On-Call Weed Watch
- ✓ Buy your flares
- ✓ Get your smart lock pin code
- ✓ Always LOCK THE GATE behind you

Boat Launch and Weed Watch Improved

One of the main responsibilities of BPLA is the "operation of Wright's Beach in a manner that will contribute to the environmental protection of Blaisdell Lake, while providing ... public boating access to the general public." For years we achieved this goal through the watchful diligence of our

resident Beach Manager, Carrie Godkin, who together with weekend weed watch volunteers ensured that boats harboring invasive species did not harm our lake water. With Carrie's retirement and the fact that half the weekend weed watch timeslots remained unfilled in recent years, the BLPA Board has instituted

a new process to protect our water quality and keeping invasive species out of the lake.

The new process includes two elements that leverage available technology; On-call Weed Watch and a smart lock on the boat launch gate. Both elements have been in place

Continued on Page 2

New Boat Launch and On-Call Weed Watch *from Page 1*

since the beginning of May and the transition to the new process is going very smoothly. Several year round residents have been on-call for all of May and June and have handled just six calls during that period, but only two day trippers needing inspection.

Any BLPA member who wishes to use the boat launch should request a pin code to the smart lock if you have not already done so. Non-BLPA boaters who intend to use the launch throughout the summer may join as Seasonal Boat Launch members and receive a unique pin code for the season. Single day users may [go online and request a launch time](#) and will be met at the gate by an On-Call Weed Watch volunteer who will inspect the boat and supply a temporary pin code following a successful inspection. Alternately, single day users may text or call the On-Call Weed Watch line to request a launch, but *online registra-*

tion is strongly encouraged. (See Page 7 for more info about the lock.)

Weed Watch still needs you! On-Call Weed Watch is a bit different and (hopefully) more convenient. [Sign up at our website](#), same as always. Rather than volunteering for a two-hour shift sitting at the beach, you can now conduct weed watch duty from home, only going to the beach when it's necessary to inspect a boat. You are encouraged to sign up for a full week or full weekend time slot. On-Call hours are 8 AM - 4 PM ONLY and you will not be the only person on-call. You can go about your day, run errands, take a shower and not be tied to the phone for the entire shift. Because of the low probability that a single day user needs inspection during your shift, its quite likely you will never be called to the lake at all. You'll simply be "on-call."

Your phone (ideally cell, but

landline works) will be linked to the Weed Watch phone line. You will be contacted shortly before your Weed Watch duty begins to link phones. If someone books a launch time in advance, you will be notified of the exact time to meet the boater at the beach, inspect the boat and issue the temporary pin code. If a day boater does not preregister and texts or calls the Weed Watch number while you are on duty, your phone - and the phones of everyone else on duty - will ring. Volunteers will be given instructions when you sign up and you'll have a chance to ask questions about the process when your phone is linked.

Without boat launch inspections, we are at significant risk of introducing milfoil to the lake, which - as you know - has already infested several nearby lakes. Every member is encouraged to volunteer for at least one On-Call Weed Watch segment this summer.

Weed Watch still needs YOU!

On-Call hours 8 AM - 4 PM

ONLY. Please sign up at our website for a full week or full weekend of on-call duty.

Running a successful volunteer organization is challenging. We are very grateful for the special efforts of the sub-committee that redesigned and implemented the improved process. Chair Kristine Mozes spent many hours researching with fellow board members Steve Domber and Cynde Robbins. Kristine has worked tirelessly to roll out the new system with the help of year-rounders Betsy and Tinker Fowler, Pete Savickas and Dorothy Jeffrey.

Please do your part and sign up for On-Call Weed Watch. For more information, visit the [BLPA Weed Watch website](#) page and the [BLPA Boat Launch page](#).

BLPA Membership Reminders

If you haven't already done so, please submit your BLPA membership dues for the 2021 season. Dues are essential to fund operating expenses, including beach taxes, water quality testing, dam registration and more. New members are welcome. Please share this invitation with any new friends or neighbors who are interested in joining our lake community.

The BLPA Membership Directory will be emailed to members in good-standing. Because of privacy concerns, we will **not** publish the directory on the BLPA website. This is a "Members Only" directory and we expect that our members will not share the information with outsiders or use it for business purposes.

Membership renewal forms were emailed last month. The form allows you to denote

Send your check made out to BLPA for \$85 to:

BLPA
Attn: Membership
PO Box 453
South Sutton, NH 03273

whether you want to request a pin code for the smart lock and if you wish to be included in the member directory. For more info, contact:

Vicki Willard, Membership Chair
vepwillard@mac.com 603-938-2547

Betsy Fowler,
tinkerf@mcttelecom.com
603-938-5367

Gail Olson, g_olson@tds.net
603-938-2446

BLPA 2021 Fourth of July Celebrations

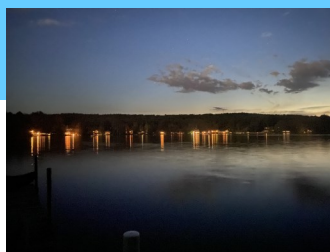
Sunday, July 4

4 PM Pud Ellsworth Boat Parade

All boats meet at Spruce Point just before 4 PM and line up behind the Queen Mary

9 PM Flares and Fireworks

Please be respectful; clean up all debris and limit use to the night of the Fourth.



BLPA will celebrate on Sunday, July 4 with our boat parade, flares and fireworks. Bradford activities are scheduled for Saturday, July 3; 5K at 9 AM, fireworks at 9:30 PM (no parade this year).

Use common sense and common courtesy when discharging fireworks. Try to avoid using fireworks that create lots of fragments and trash that can litter our beaches and coves. Please clean up all debris. As a courtesy to all, try to limit the use of fireworks to the designated Flares and Fireworks night on July 4.



Flares for Sale!

Proceeds to benefit BLPA

Contact Bill Hallahan

603-938-2339

Keeping Up with NH LAKES

BLPA belongs to the statewide New Hampshire Lakes Association, Inc. (NH LAKES), a nonprofit organization with a mission to keep New Hampshire's lakes clean and healthy, now and in the future. NH LAKES advocates with the NH legislature in support of lake-friendly legislation to protect water quality and safe boating. They sponsor a number of important programs, including the Lake Host program entering its twentieth year, and also provide many educational offerings.

Among their educational offering is an extensive online library of free videos and webinars covering an

array of topics such as the ecology of lakes and folks who are working together to keep them clean and healthy, or what individuals can do in their home, on their property and along and on the water to help keep lakes clean and healthy. [Visit the NH LAKES website](#) to register for free upcoming webinars and to view past webinars. The topic of the July webinar is *Enjoying Lakes While Protecting Wildlife*.

NHLAKES runs the LakeSmart program, an education, evaluation, and recognition program that is free, voluntary, and non-regulatory. It includes an evaluation process to de-

termine how lake-friendly your property and activities are. The program includes an extensive online [LakeSmart Resource Library](#), with reliable and accurate information to help you with LakeSmart lake-friendly living projects on your property and in your home. Check it out.



Learn more and support clean and healthy lakes in New Hampshire at nhlakes.org

Welcome New Members

Mark and Diane Preston, Newton, MA—Peacock cottage on Old Blaisdell Road

John and Krista Haynes, Boca Grande, FL— Mears property on Johnson Hill Road

Dawn Godkin and Diana Sutherland, CA—Godkin home on Andrews Ave (yes, Carrie and John's daughter)

Little by Little - Step Back in Time

By Cynde Robbins

Once there was a group of couples who became close friends as they square danced together during the winter months of the early 1930's. In 1936, one of the couples, Russell "Pud" and Louise Ellsworth, acquired property on Blaisdell Lake that included Spruce Point and additional acreage, a portion of which the Ellsworths then sold to family and friends. When a family member decided not to keep their purchase, my Grampa acquired the lot and began to create many years of memories on the shores of Blaisdell Lake. The four couples included the Ellsworths, Jo and Waldo Bigelow, Edgar and Emma Winslow, and my grandparents, Earl and Isabelle Little. Soon after building, the Winslows sold to Bill and Ruth Hungerford. This group became known to me as the "camp crowd." A few years later, Louise Ellsworth's sister and husband, Charlotte and Dawson Hall, bought land over next to Wabasso, built a camp and joined the "camp crowd." In later years, Grammie's sister, Peg Leichthammer, was adopted into the group when she and her husband bought their place over on Bass Point.

The couples all lived in their camps during the summer months, with the

men commuting to work during the day and the women staying at camp happy as clams. My grandmother loved it at the lake! Those were the days of one car families. There was one car left at Blaisdell for emergencies and the wives didn't care if they couldn't leave the lake. Imagine being happy without TV or a hot shower! Those amenities would come much later. When I was old enough to have my license, it was a big deal to drive up to camp by myself all the way from Bow. I always knew where to find the "camp crowd" on Saturday nights. They took turns hosting supper in one camp or another and always welcomed me.

"Grammie kept a journal at camp for many years. She logged who came and went. She asked visitors to sign her log so we have a lot of history in that journal."

Grampa, known to all as Hank, started building our camp in 1937 by clearing his land and building a stone fireplace. The following year he started building the kitchen and main room. Grampa built a huge wooden box to store his tools and equipment. My mother recalled that in order to keep warm since building



Hank's big catch!

continued throughout the year, she and her brother, Herb, played in that box many days they were at the lake. Mom and her brother were also required to lug rocks for the fireplace. Grampa was an agricultural teacher and very frugal. He gratefully accepted donations of anything in the way of building supplies. In fact, some projects, like the front porch, weren't built until a friend of Grammie's was replacing her porch windows and offered the old ones to Grampa. In 1938, there was a major hurricane that took down massive amounts of trees in NH making lumber very affordable and that's when the main room, kitchen and bathroom of camp were built. Little by Little Camp never had an outhouse as most camps did. It always had an inside toilet. That was Grammie's only very firm request.

My grandmother never had nor wanted a washing machine or dryer. She went to the laundromat every Monday to do the wash and chat with friends. One Monday she was asked what the name of her camp was going to be. One of the gals said you should call it "Little by Little" since that is exactly who and how it is being built. And that's how camp got its name.

Grammie kept a journal at camp for many years. She logged who came and went. She asked visitors to sign her log so we have a lot of history in that journal. She noted the first time my mother brought me to camp and when I had my first swim at 6 months old. She recorded the weather, when they opened and closed camp, what building projects they worked on and how much each cost, where they

Adopt-A-Highway

Since 1995, BLPA has sponsored a three mile stretch of Route 114 for the NH Department of Transportation's Adopt-A-Highway program. This stretch runs from the blinking light in Bradford to Russell Pond.

John Biewener received an Achievement Award in 2011 for his stewardship of the program on behalf of BLPA. Tim Beale assumed the

Adopt-A-Highway responsibilities from John in 2009 and has been running the program like clockwork since. After a dozen years of outstanding service, Tim is stepping down from this responsibility. BPLA is still registered with the state to care for this section of road, but we need a new point of contact to step up and assume the reigns from Tim.

The task typically takes a day in the spring and again in the fall. As much as it would be nice to perform a summer cleanup, Tim advises steering clear of the season when poison ivy tends to be out in force. Tim reports that a typical haul is 10 bags of trash per pickup which are left for NH DOT to collect by the roadside.

If you would be interested in spearheading this effort on

behalf of BLPA, please contact Betsy Fowler or another member of the Executive Committee. If you are interested in volunteering for the spring or fall cleanup, please let Betsy know.

If you would be interested in spearheading BLPA's Adopt-A-Highway effort, please contact Betsy Fowler.

Little by Little *from Page 4*

were each Saturday night and what they ate, who had a birthday and what celebrations happened. Just last summer my friend Sharon Kenrick discovered that Grammie wrote about going to the Boutwells, who owned a camp near the Dog House, and there she met the Kenricks whom she had not known before. It's such a small world!

me and my husband. The camps are situated very close together and Bill and Ruth didn't want to do anything that would negatively impact my grandparents. I could not believe my good fortune when my grandfather called to tell me that Hungerfords wanted us to buy their camp, but thought it would not be possible. The timing could not have

It was tough but we managed to make it work. I was still working full time then but spent as much time as possible at camp over the next three years before Grampa died in 1987. I am very thankful to have had that time at camp with both grandparents.

men worked for the state at that point; Grampa for the State Board of Education and



Grammie (Isabelle Little) and Cynde, 1977

In 1984 when the Hungerfords decided to sell their camp directly adjacent to my grandparents, they talked to my grandparents about offering their camp to

been worse for us as we had just moved into a new home in Scituate and were wrapped up in debt. Bill and Ruth were very kind and worked with us financially so we could afford it.



Hank and Isabelle, 1985

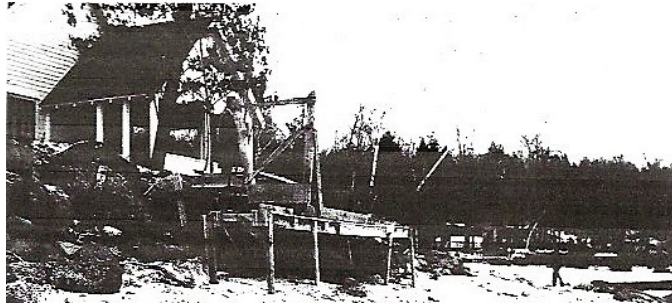
In 1949, a group of shore-front property owners initiated actions to stabilize the level of the lake as the dam had fallen into disrepair. Pud and Grampa decided that there should be a lake property owners association and BLPA was born as the Blaisdell Lake Property Owners Association in 1950. Pud and Grampa also decided that the newly formed association should own the rights to the dam so they lobbied the state and won those rights. Both

Pud for the Highway Dept as a supervisor, so knew their way round the state agencies. Grampa was nicknamed "The Man Behind the Dam" for his efforts. I have a hand drawn poster of my Grampa standing astride the dam in our camp. Lots of history to remember and cherish.

Cynde lives in Scituate MA with husband, Wayne, and is passionate about her family, artisanal crafting, gardening, open space preservation, and of course, Blaisdell Lake.

Constructing the “New” Dam

As Cynde Robbins shared in her Little by Little recollections, the original dam at the south end of Blaisdell Lake had become essentially worthless once the downstream manufacturing businesses turned from water power to distributed electricity in the mid 1940's. It became difficult



to maintain adequate water levels in the lake, as the photo circa 1940 of the Blodgett Cottage (above)

high and dry demonstrates. The lake community pulled together, led by core members of the “camp crowd” to fund and build a new, functioning dam that would serve the newly formed Blaisdell Lake Property Owner's Association.

Thanks to Chan Blodgett, here's what the new dam cost to build.

Donation of supplies: Mr. Wayne O'Neill donated lumber, Mr. Elmer Bartlett donated gravel and The Town of Sutton donated trucks to haul gravel. The gate itself was donated by Messers Russell Ellsworth, Earl Little, Edger Winslow and Waldo Bigelow, Jr.

<u>Actual construction costs of the dam:</u>		<u>Gate project:</u>	
Labor	\$234.33	Labor	\$37.50
110 bags of cement	\$126.50	5 bags cement.	\$ 6.75
300 lbs cement rods	\$ 34.00	Gravel	<u>\$ 1.00</u>
Truck drivers	\$ 16.00		\$44.25
Gravel loader	\$ 18.00	Postage (102 stamps)	\$3.06
35 lbs nails	\$ 3.50	(yes, postage was 3¢)	
Travel for J Soboll	<u>\$ 10.00</u>	Stationary	\$1.10
	\$426.32		



In Memoriam

We are sad to share the news of the passing over the winter of two long-standing BLPA members.

Veda Whipple Hosmer (1936 – 2021)

Veda passed on February 1, 2021. She was born in Newport, NH on February 1, 1936. When Veda was just five years old, her parents purchased the house known as the Marietta Ferry homestead, the second house south of the Old Store Museum on the South Sutton Common. Veda had a short walk out her front door to the one room South Village (District

9) schoolhouse, which she attended through eighth grade. Veda graduated from New London High School in 1954 and married Charley Hosmer on Nov. 11, 1956. While Veda and Charley spent their lives together in Newbury, they were highly involved in the Sutton community, where Charley's dad, George, owned a home across from Wright's Beach at Blaisdell Lake. Together with Charley, Veda was an honorary member of the Sutton Historical Society and a life member of the Blaisdell Lake Protective Association.

Veda was predeceased by Charley, her husband of 58 years, in 2015. She is survived by two daughters, Debbie Hosmer of Sutton, NH and Elizabeth “Betsy” Seufert and her husband, Chris of Fort Myers, FL.

Weldon "Harrie" Rand II (1944 – 2020)

Harrie passed away on December 7, 2020 following a courageous five year battle with brain cancer. He was born in Dover, NH on July 23, 1944.

Harrie was employed by Pratt & Whitney for 41 years. Following retirement

from P&W in 2006, he and his wife, Marsha, purchased a lake home on Blaisdell Lake in her hometown of Sutton, NH . They then renovated and were looking forward to many years on the lake. Harrie enjoyed performing home remodeling as a hobby.

Harrie is survived by his loving wife and caregiver Marsha, daughter Wendy and her husband Robert DeFurio, son Scott Rand and Kim, granddaughter Ashley DeFurio and her Fiancé Adam Trapp and great-granddaughter Peyton.

Bass Point's Peg Leichthammer Turns 105!

Amidst a backdrop of balloons, music, friends and family, Margaret "Peg" Leichthammer celebrated her 105th birthday in Lansdale, PA on March 23, 2021. Peg celebrated with family and a parade of vehicles from the Lansdale Borough Police Department and Fairmount Fire Company paying tribute on her special day.

Peg has the pleasure of spending many of her years on the shores of Blaisdell Lake. Her older

sister, Isabelle, married a NH man, Earl Little, which drew Peg to NH just after the Hurricane of '38 - back when what is now a 7 hour drive from PA took two days. That was Peg's first visit to Blaisdell Lake, where she saw what the Littles were building on Spruce Point.



Well deserved birthday treat!

Peg and husband Frank began vacationing at the lake in 1947 with their children, Frank and Peggy, first staying at Little by Little, then at various rentals around the lake including Lazy Lodge and Frank Wise's camps. They eventually bought their camp on Bass Point in 1968 from the original owner's, the Caldwells. Upon retir-

ing, Peg and Frank spent as much time as possible at the lake, staying until late fall when the cold weather finally chased them back to PA.

After Frank's passing in 1990, Peg came to Bass Point by herself for four years, then continued coming with daughter, Peggy, until just past her 97th birthday.

When Peg learned of this article (we had to check facts with her!), she said she's thrilled to know that she's still making the news!

Lock and Load

The smart lock system at the boat launch gate is new to all of us. We appreciate your patience as we all learn the ropes.

On a few occasions, we have found the gate closed -- and the lock locked-- but the chain was not properly around both gate posts. This means that, technically, the gate was not locked. Refer to the picture of what the gate looks like when fully closed and locked -- with the chain/lock through both posts. When you re-

lock the gate behind you, please make sure the lock is locked AND the chain is through both posts as shown in the picture.

PLEASE make sure you close and properly lock the gate after you at all times. This is the only way we can protect Blaisdell Lake from milfoil infestation that would greatly harm our waters.



Thanks to the talented Gretchen Gudefin for the beautiful painting that serves as our newsletter masthead.



We want to hear your story!

- [Send us stories](#) to share with our fellow members
- Family stories about your camp or cottage
- Pictures, memorabilia and other lake memories
- History of how you came to Blaisdell Lake
- And much more!

Kindly direct omissions, corrections, and suggestions for additional content to Newsletter Editor, Dorothy Jeffrey djeffrey@comcast.net

Blaisdell Lake Protective Association

PO Box 453
South Sutton, NH 03273
www.blpoa.org



BLPA IS A 501(C)(3)
ORGANIZATION DEDICATED TO
THE PROTECTION AND
ENHANCEMENT OF BLAISDELL
LAKE AND ITS WATERSHED

BLPA Executive Board Contact Information

President - Doug DeLand

dkkjdeland@comcast.net

Vice President - Steve Domber

steven.domber72@gmail.com

Treasurer - Kristine Mozes

kristine.mozes@gmail.com

Clerk - Betsy Fowler

tinkerf@mcttelecom.com

Past President - Chris Kelley

kelleylawofficenh@gmail.com

Back Page Story—Highmowing Farm

Our resident lake historian, Chan Blodgett, shares this image of a painting of Highmowing Farm circa 1820, provided by a descendant of the Andrews family, for whom Andrews Avenue bears its name. The brick house and barn once stood just south of the junction of Highmowing Road and Andrews Ave. Chan remembers as a teenager a broken down brick building that was affectionately known as the Haunted House. The house vanished altogether about 20 years later, according to Chan.

References to the brick house appear in early Sut-



ton history, first erected by Nathan and Hannah Andrew in 1811, reduced to ashes in 1834, rebuilt and burned again in 1890. Two of Nathan's sons married

Pillsbury girls, which perhaps explains why the painting now resides in Minnesota.

The June, 1906 issue of *Country Life In America*

listed "Fine Opportunity in New Hampshire Hills—Two complete adjoining farms and buildings with 200 acres ... within one mile of Bradford NHRR Station, three hours ride from Boston, one hour from Concord, four trains daily during the summer. Within seven miles of Lake Sunapee located on fine elevation overlooking beautiful lake a mile long and within a quarter mile of the house. A beautiful view of Kearsarge Mtn and the surrounding hills from the front porch. Buildings contiguous to telephone lines. Running water at barn and 2 rooms of the house. A most desirable place ..."